

**FAR\*SEE**



# FARSEE

## KNUCKLE BOOM CRANE

New Generation / K Series / Leading Type

- ✓ ISO 9001 Quality Management System
- ✓ ISO 14001 Environmental Management System
- ✓ GB / T28001 Occupational Health & Safety Management System

**SAFETY**  
**ENVIRONMENTAL PROTECTION**  
**FASHION**  
**PRECEDENCE**



## **FARSEE KNUCKLE BOOM CRANE**

FARSEE K-series knuckle boom truck-mounted crane is a whole new type. Not only this series of products has a distinguished out looking, but also it has an excellent performance in many other aspects as below. Boom system, which is optimized designed, has a higher rigidity and better stability. The strong structure of quadric crank increases the lifting capacity of cylinder greatly. The security of the whole set is greatly improved by equipping of many kinds of safety valve locks. Dual controlling system lessens the possibility of danger caused by accident. High-positing seat is fixed to enlarge the controller's sight. Wireless remote controlling system gives you a bigger moving space. The crane has a better out looking by the optimized design in visual division method. Booms are telescoping synchronously that greatly increase your working effect. Meanwhile, multifunctional assistant tools make your working more convenient. Smaller installation space saves every inch for you. This series of cranes are manufactured with strong steel plate that reduce the whole weight and increase the transporting ability of the truck.

# SQ16ZK4 SQ16ZB4

- Hexagon boom with high rigidity.
- International complement makes hydraulic valve more secure and reliable.
- Imported cylinder seal with more durable.
- Floating tripe bridge give a etter protection to the main beam.
- Manufactured with strong steel plate that is lighter with bigger capacity.
- 360° rotation makes operation more convenient.



# SQ12ZK3Q SQ12ZB3Q

- Optional seat to enlarge the controller's view.
- Equipment of higher quality and bigger torque guarantee the controlling security in all kinds of adverse situation.
- Automatic reversible outriggers to improve the passing ability of the vehicles under non-working state.



# SQ10ZK3Q SQ10ZB3Q

- Optional seat to enlarge the controller's view
- Automatic reversible outriggers to improve the passing ability of the vehicles under non-working state.



# SQ8ZK3 SQ8ZB3

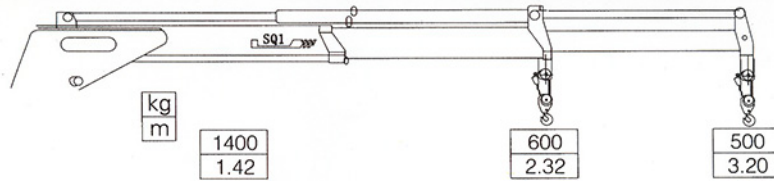
- Hexagon boom with high rigidity.
- International hydraulic valve lock with safer and more reliable qualities.
- 24° awl-type tie-in and the high-accuracy cold-drawing pipeline which can solve the oil leakage completely.
- Imported cylinder seal with more durable.
- Floating triple bridge give a better protection to the main beam.
- Manufactured with strong steel plate that is lighter with bigger capacity.



# Farsee Knuckle Boom Crane

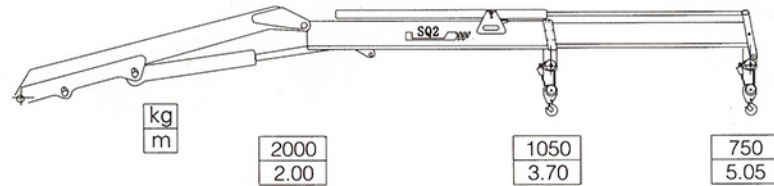
**SQ1ZK2**

**SQ1ZB2**



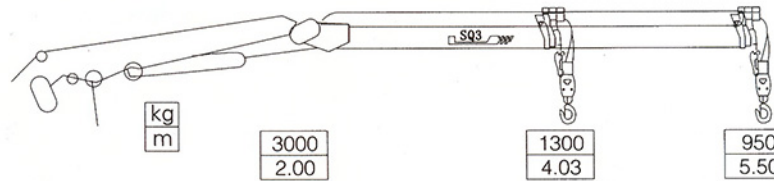
**SQ2ZK1**

**SQ2ZB1**



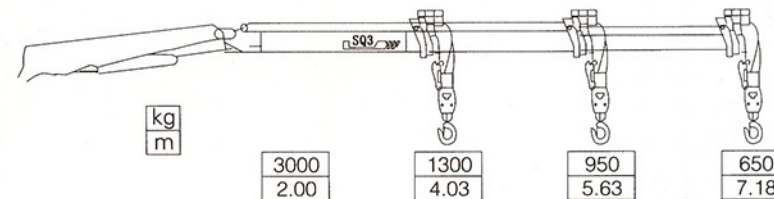
**SQ3ZK1**

**SQ3ZB1**



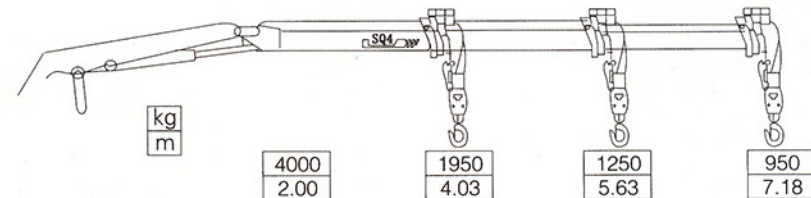
**SQ3ZK2**

**SQ3ZB2**



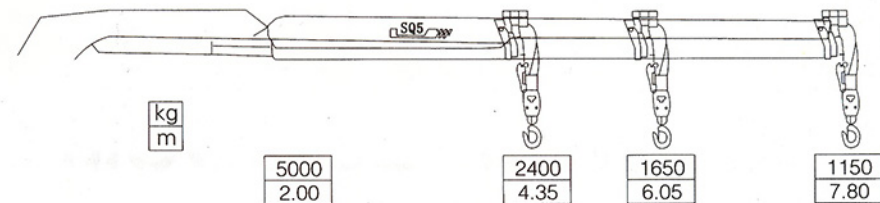
**SQ4ZK2**

**SQ4ZB2**



**SQ5ZK2**

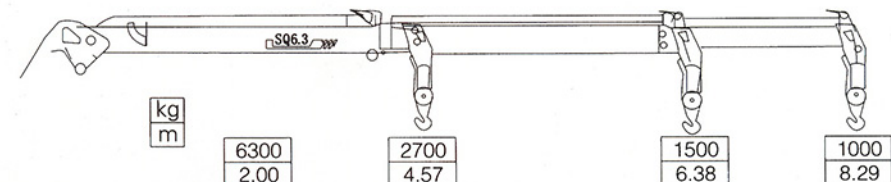
**SQ5ZB2**



**SQ6.3ZK2**

**SQ6.3ZB2**

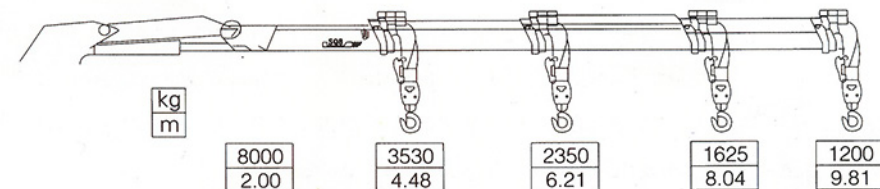
**SQ6.3ZB3**



**SQ8ZK3**

**SQ8ZB3**

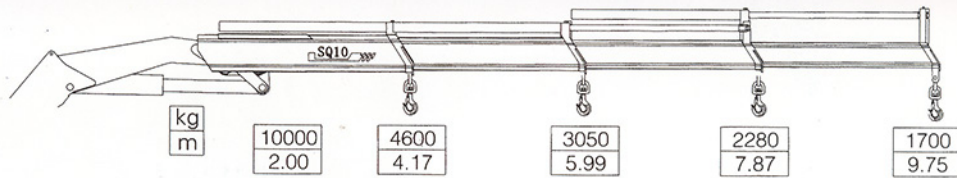
**SQ8ZK3Q**



# Farsee Knuckle Boom Crane

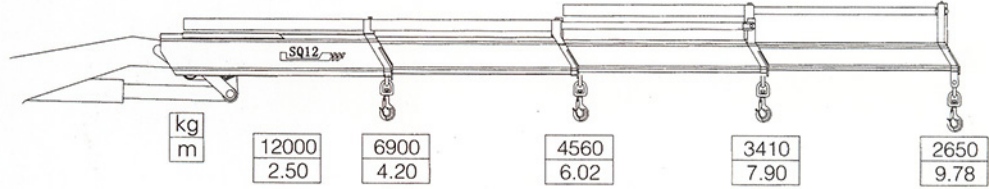
**SQ10ZK3Q**

**SQ10ZB3Q**



**SQ12ZK3Q**

**SQ12ZB3Q**

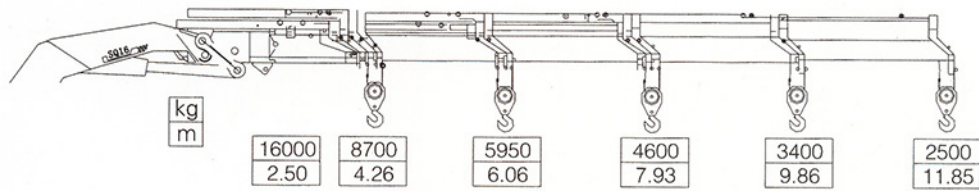


**SQ16ZK4**

**SQ16ZB4**

**SQ16ZK4Q**

**SQ16ZB4Q**



**MODEL**

SQ1ZK2	SQ2ZK1	SQ3ZK1	SQ3ZK2	SQ4ZK2	SQ5ZK2	SQ6.3ZK2	SQ8ZK3	SQ10ZK3Q	SQ12ZK3Q	SQ16ZK3
SQ1ZB2	SQ2ZB1	SQ3ZB1	SQ3ZB2	SQ4ZB2	SQ5ZB2	SQ6.3ZB2	SQ8ZB3	SQ10ZB3Q	SQ12ZB3Q	SQ16ZB3
SQ6.3ZB3										

Max Lifting Capacity	K.G	1000	2000	3000	3000	4000	5000	6300	8000	10000	12000	1600
Max Lifting Moment	T.M	2	4	6	6	8	10.5	12.6	16	20	30	40
Recommended power	KW	5.05	5.05	14	14	14	18	18	22	28	32	37
Max Oil Flow Of Hydraulic System	L/MNI	16	20	25	25	25	25	25	45	40	55	63
Rated Pressure Of Hydraulic System	MPA	20	22	22	22	26	30	28	26	28	36	30
Oil Tank Capacity	L	20	25	60	60	60	75	130	130	140	220	250
Rotation Angle	ALL ROTATION	370°	370°	370°	370°	370°	370°	370°	370°	ALL ROTATION	ALL ROTATION	ALL ROTATION
Crane Weight	KG	450	850	1080	1100	1250	1800	2300	2500	3477	4130	5600
Installation Space	MM	450	850	850	850	850	1150	1150	1500	1150	1400	1500

(All specifications are subject to technical modifications without notice)



**Distributed by:**

**Far See Truck Mounted Crane Sdn. Bhd. (764031 T)**

Address : No 4, 1st Floor, Pusat Perniagaan NBC,  
Jalan Pulau Pinang 3, Off Jalan Meru,  
41050 Klang, Selangor Darul Ehsan,  
West Malaysia.

Sales & After Sales Tel : 603 33446588 / 33434339

Sales & After Sales Fax : 603 33444588

Email : sendok@po.jaring.my <http://www.sungaisendok.com>